

General Product Description

NCR N3000

The NCR N3000 is a small form factor, solid-state, back of house server designed and built for best in class reliability. The N3000 is a completely solid state device utilizing SSD storage, a passively cooled heat spreading enclosure and low power – high performance components. The N3000 was designed for multifunctional server environments and has the ability to run a single OS or multiple virtual machines.



The N3000 utilizes Intel's® Q77 express chip set in addition to their newest dual core low power processors including a 2.3GHz G1610T Celeron Processor, a 2.9GHz i3-3240T Processor and a 2.9GHz i5-3470T Processor capable of up to 3.6GHz Max Turbo Frequency. With a highly reliable design, a fast processor, DDR3 SDRAM, USB 2.0 and USB 3.0, dual video outputs and much more, the N3000 provides enough power for the most demanding software for years to come.

Platform Highlights

- Compact design with flexible mounting option.
- Fast I/O interfaces including USB 3.0, Dual onboard Intel Pro GbE with Intel AMT.
Expandable up to 6 Ethernet ports (select configurations only)
- Solid State SATA Drives (up to 2) & DDR3 memory
- Wireless option available with dual dipole antennas



©2013 NCR Corporation

All Rights Reserved

No part of this document may be reproduced, stored in a retrieval system, or transmitted in any form or by any means, electronic or mechanical, including photocopying and recording for any purpose, without the prior written permission of NCR.

INFORMATION IN THIS USER DOCUMENT IS SUBJECT TO CHANGE BY NCR WITHOUT NOTICE. Microsoft and Windows are registered trademarks.

N3000 Every-Unit-Item Features and Benefits

Every unit item model number: **1657-XXXX-8801**

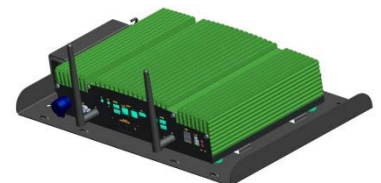
Features	Benefits
Intel® dual core 2.3 GHz Celeron™ Processor Intel® dual core 2.9 GHz i3 Processor Intel® dual core 2.9 GHz (3.6GHz Turbo) i5 Processor	Fast performance, low thermal processor utilizing dual core technology that allows for two complete execution cores in a single processor allowing advancements for multi-threaded applications and multi-tasking.
Dual Independent Digital Displays	Using both the HDMI and Displayport connection allows for two simultaneous independent displays.
Compact Form Factor	Compact heat spreading design allows for flexible mounting options in a solid state device.
High Speed USB 3.0	Latest standard for USB connectivity
SATA SSD drives	80GB capacity solid state drives (SSD) standard. Additional capacities may be available. No moving parts allow for increased uptime and better reliability.
Dual Gigabit LAN Ports	Allows for high speed networking connections. Up to 6 dedicated Gbe network ports available with select configurations only.

Mounting Options

Counter Top mounting – requires no additional hardware.



Wall Mounting – Requires the addition of the wall mount bracket kit - **1657-K000**



2U Rack Mount - Requires the addition of the rack mount bracket kit - **1657-K001**

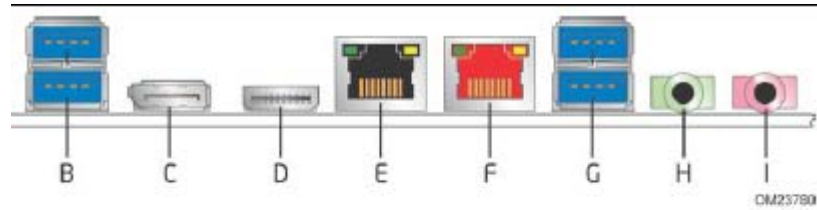


N3000 Specifications

CPU	Intel® Celeron™ Processor G1610T (2M Cache, 2.3 Ghz dual core) Intel® i3-3240T™ Processor (3M Cache, 2.9 Ghz dual core) Intel® i5-3470T™ Processor (3M Cache, 2.9 Ghz / 3.6GHz Turbo dual core)
Volatile Memory	2 GB DDR3 Standard, 2 SODIMM slots up to 16GB supported
Networking	Two Gigabit (10/100/1000 Mb/s) LAN subsystems using the Intel® 82579LM Gigabit Ethernet Controller (red connector) and Intel® 82574L Gigabit Ethernet Controller (black connector) Up to 6 dedicated Gbe network ports available with select configurations only.
Mass Storage	80GB SSD Standard
USB	4 USB 3.0, 2 USB 2.0
Audio	3.5mm Line out & Mic Input
Video	HDMI & DisplayPort
Wireless	A/G/N Wireless with Dual external Dipole Antennas (select configurations only)
Operating System	Windows 7 Professional (32 bit and 64 bit)
Power Supply	External 19V DC, 90W Full Range Power supply with locking connector.
LED Indicators	HDD and Power LED indicators on the rear IO panel
Kensington Lock	Supported
Dimensions	12.8" Wide x 9.1" Deep x 3.37" Tall
Weight	12.5 lbs
Operating Temperature	32°F – 104°F , 0° – 40° C
Storage Temperature	32°F – 158°F, 0° – 70° C , Must be in original pack material in humidity controlled environment.
Humidity	5% - 85% non-condensing
Environmental compliance	ROHS, WEEE
EMI Certifications	FCC Class A, CE, C-tick
Safety Certifications	TUV, CB Scheme

N3000 Back Panel Connectors

1) Standard IO Connections



Item	Description
B	USB 3.0 ports
C	DisplayPort connector
D	HDMI connector
E	LAN port
F	LAN port supporting Intel AMT
G	USB 3.0 high-current charging ports
H	Analog Line out
I	Microphone in

2) Unmanaged solution



3) Optional configuration showing additional 4 network ports and wireless



Installation Notes

Footprint: 2.0 inches of clearance above, behind, and to the sides of the N3000 is necessary to properly install a N3000. This will accommodate the unit as well as its associated cable connectivity and provide for proper ventilation.

Moisture: The N3000 unit should not be installed in areas where they might be exposed to direct water spray. N3000 units are not meant for outdoor installation.

Power: The N3000 has an external 90 watt power supply rated for 110V and 240V (Auto-sensing), 50Hz or 60Hz. Source power is drawn from a regular AC wall outlet. The electronics are “universal” – that is, they will function when connected to standard wall outlets of most nationalities around the world. For use in locales other than North America, special wall outlet adapters or cables will be required. For international configurations of the N3000, typically the country specific power cord is ordered separately.

N3000 is used as the basis for the managed Ever Cloud service, which combines back-of-the-house server, network firewall and other IT services into a single solution overseen by NCR. It ensures reliable POS operations and safeguards the network, allowing NCR’s customers to focus on their business without worrying about infrastructure failures or security breaches

